

## \$675,000 - 4063 Aspen Drive, Edmonton

MLS® #E4457397

**\$675,000**

4 Bedroom, 3.00 Bathroom, 1,368 sqft

Single Family on 0.00 Acres

Aspen Gardens, Edmonton, AB

Discover this beautiful mid-century modern home in sought-after Aspen Gardens. The main level showcases soaring vaulted ceilings with exposed beams and an airy open-concept layout that connects the kitchen, dining, and living spaces. Updates throughout include some updated windows, high-efficiency furnace, refreshed bathrooms and kitchen, carpet and paint, plus restored original hardwood floors. The sleek European-inspired kitchen is equipped with plenty of storage, induction cooktop, built-in wall oven, and microwave hood fan. Additional upgrades feature modernized electrical, re-tiled showers, improved plumbing, exterior-vented bathroom fans, custom closets and cabinetry, and a renovated garage. Outside, enjoy lush landscaping with mature trees and perennials, a spacious deck, and a brand new fence—all creating a private, park-like yard. Located near Rainbow Valley trails, Snow Valley Ski Hill, excellent schools, shopping, and easy access to Whitemud Freeway.

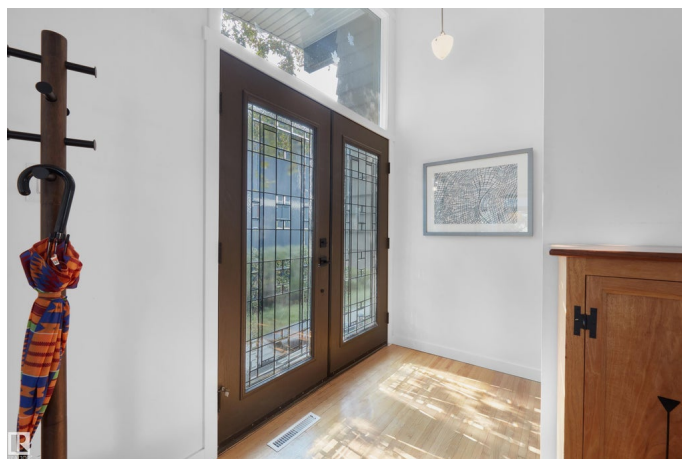
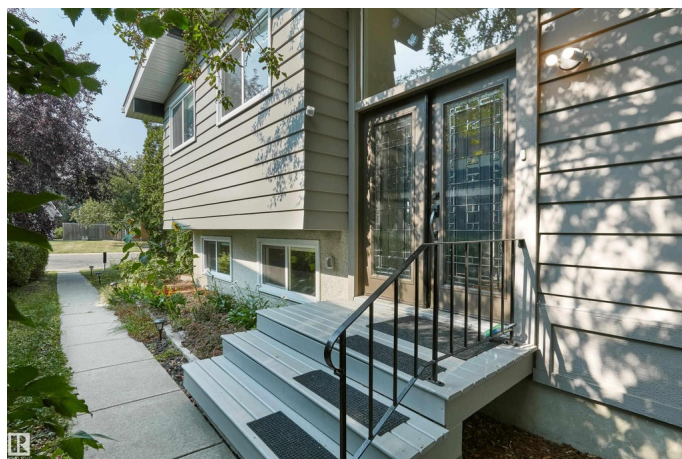
Built in 1965

### Essential Information

MLS® # E4457397

Price \$675,000

Bedrooms 4



Bathrooms	3.00
Full Baths	3
Square Footage	1,368
Acres	0.00
Year Built	1965
Type	Single Family
Sub-Type	Detached Single Family
Style	4 Level Split
Status	Active

### Community Information

Address	4063 Aspen Drive
Area	Edmonton
Subdivision	Aspen Gardens
City	Edmonton
County	ALBERTA
Province	AB
Postal Code	T6J 2A7

### Amenities

Amenities	Front Porch, Open Beam, Storage-In-Suite, Vaulted Ceiling, See Remarks
Parking	Double Garage Detached

### Interior

Interior Features	ensuite bathroom
Appliances	Dishwasher-Built-In, Dryer, Microwave Hood Fan, Oven-Built-In, Refrigerator, Washer, Window Coverings, Stove-Countertop Inductn
Heating	Forced Air-1, Natural Gas
Stories	4
Has Basement	Yes
Basement	Full, Finished

### Exterior

Exterior	Wood
Exterior Features	Back Lane, Fenced, Fruit Trees/Shrubs, Golf Nearby, Landscaped, Public Swimming Pool, Public Transportation, Schools, Shopping Nearby, See Remarks
Roof	Asphalt Shingles

Construction	Wood
Foundation	Slab

**School Information**

Elementary	Westbrook
Middle	Vernon Barford
High	Harry Ainlay

**Additional Information**

Date Listed	September 12th, 2025
Days on Market	1
Zoning	Zone 16

DATA IS DEEMED RELIABLE BUT IS NOT GUARANTEED ACCURATE BY THE REALTORS® ASSOCIATION OF EDMONTON. COPYRIGHT 2025 BY THE REALTORS® ASSOCIATION OF EDMONTON. ALL RIGHTS RESERVED.Trademarks are owned or controlled by the Canadian Real Estate Association (CREA) and identify real estate professionals who are members of CREA (REALTOR®, REALTORS®) and/or the quality of services they provide (MLS®, Multiple Listing Service®)

Listing information last updated on September 13th, 2025 at 5:17pm MDT