

Courtesy Of Holly Walker Of Initia Real Estate

\$799,900 - 201 Erin Ridge Drive, St. Albert

MLS® #E4451784

\$799,900

3 Bedroom, 2.50 Bathroom, 1,623 sqft
Single Family on 0.00 Acres

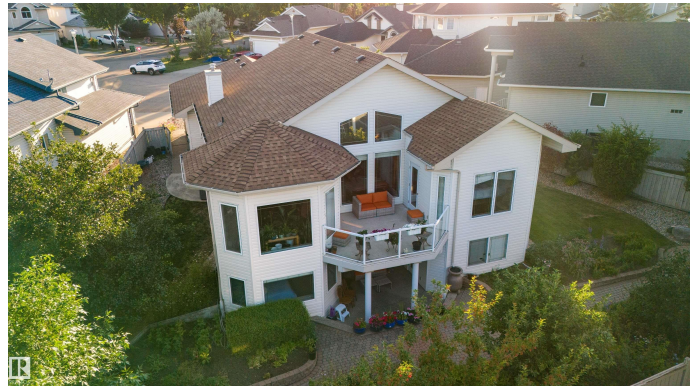
Erin Ridge, St. Albert, AB

Stunning Walkout Bungalow in Erin Ridge â€“ Loaded with Luxury! Fall in love with this immaculate custom-built walkout bungalow on a quiet pie-shaped lot in the prestigious Erin Ridge! From the moment you step inside, youâ€™ll be wowed by the soaring VAULTED CEILINGS, rich red oak HARDWOOD, and bright OPEN-CONCEPT design. The heart of the home features a beautifully upgraded kitchen with brand-new MARBLE countertops, a WALKTHROUGH PANTRY, and a one-of-a-kind octagon-shaped dining nook with gorgeous views of the PROFESSIONALLY LANDSCAPED YARD. The spacious primary retreat offers a large ENSUITE, WALK-IN CLOSET, and PRIVATE DECK access for your morning coffee or evening wind-down. The fully finished walkout basement is perfect for entertaining, complete with a cozy GAS FIREPLACE, BAR and a custom MEDIA NOOK for movie nights. INCLUDES A/C, and Water Softener. This home has it all: location, luxury, and lifestyle. Donâ€™t miss your chance to own this Erin Ridge gem!

Built in 2001

Essential Information

MLS® #	E4451784
Price	\$799,900



Bedrooms	3
Bathrooms	2.50
Full Baths	2
Half Baths	1
Square Footage	1,623
Acres	0.00
Year Built	2001
Type	Single Family
Sub-Type	Detached Single Family
Style	Bungalow
Status	Active

Community Information

Address	201 Erin Ridge Drive
Area	St. Albert
Subdivision	Erin Ridge
City	St. Albert
County	ALBERTA
Province	AB
Postal Code	T8N 6Z3

Amenities

Amenities	Bar, Ceiling 9 ft., Vaulted Ceiling, Walkout Basement
Parking	Double Garage Attached

Interior

Interior Features	ensuite bathroom
Appliances	Air Conditioning-Central, Dishwasher-Built-In, Refrigerator, Satellite TV Dish, Stove-Gas, Washer, Water Softener, Window Coverings
Heating	Forced Air-1, Natural Gas
Fireplace	Yes
Fireplaces	Mantel, Three Sided
Stories	2
Has Basement	Yes
Basement	Full, Finished

Exterior

Exterior	Concrete, Brick, Vinyl
Exterior Features	Cul-De-Sac, Fenced

Roof	Asphalt Shingles
Construction	Concrete, Brick, Vinyl
Foundation	Concrete Perimeter

Additional Information

Date Listed	August 7th, 2025
Days on Market	70
Zoning	Zone 24

DATA IS DEEMED RELIABLE BUT IS NOT GUARANTEED ACCURATE BY THE REALTORS® ASSOCIATION OF EDMONTON. COPYRIGHT 2025 BY THE REALTORS® ASSOCIATION OF EDMONTON. ALL RIGHTS RESERVED. Trademarks are owned or controlled by the Canadian Real Estate Association (CREA) and identify real estate professionals who are members of CREA (REALTOR®, REALTORS®) and/or the quality of services they provide (MLS®, Multiple Listing Service®)

Listing information last updated on October 16th, 2025 at 2:02pm MDT