

\$778,000 - 972 Wallbridge Place, Edmonton

MLS® #E4446022

\$778,000

4 Bedroom, 3.00 Bathroom, 1,944 sqft
Single Family on 0.00 Acres

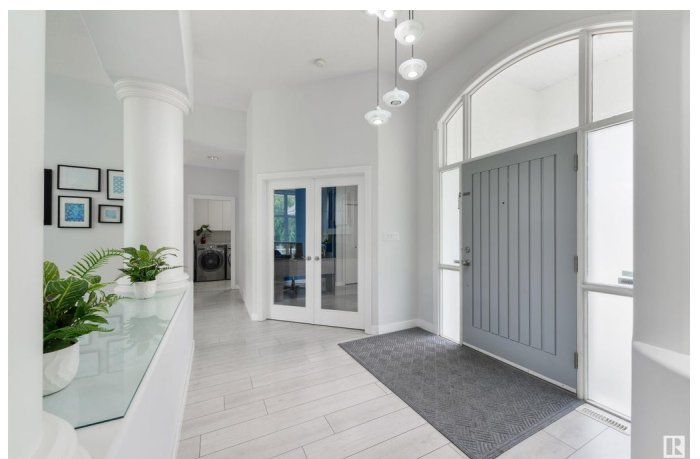
Oleskiw, Edmonton, AB

Discover your dream home in the highly sought-after "The Country Club" neighborhood of Oleskiw, Edmonton. This spacious, fully renovated bungalow offers over 3,700 sq ft of luxurious living space, perfectly blending elegance and functionality. Step inside to a sun-drenched living room, boasting large windows updated in 2016 for abundant natural light. The recent renovations truly elevate this property, featuring a stunning gourmet kitchen with granite countertops and stainless steel appliances. Indulge in the primary en-suite bathroom, a true spa-like retreat with heated floors, ideal for chilly mornings. The fully finished basement, complete with new carpeting (2024), is designed for entertaining. It includes a built-in cabinet and two wine/beverage coolers, making it the perfect spot for social gatherings. With two additional bedrooms and a convenient Jack-and-Jill bathroom, there's ample space for family and guests. Enjoy an unparalleled lifestyle in this prime location.

Built in 1997

Essential Information

MLS® #	E4446022
Price	\$778,000
Bedrooms	4



Bathrooms	3.00
Full Baths	3
Square Footage	1,944
Acres	0.00
Year Built	1997
Type	Single Family
Sub-Type	Detached Single Family
Style	Bungalow
Status	Active

Community Information

Address	972 Wallbridge Place
Area	Edmonton
Subdivision	Oleskiw
City	Edmonton
County	ALBERTA
Province	AB
Postal Code	T6M 2L7

Amenities

Amenities	Deck, Detectors Smoke, Fire Pit, No Animal Home, No Smoking Home, Vaulted Ceiling, Vinyl Windows
Parking Spaces	4
Parking	Double Garage Attached

Interior

Interior Features	ensuite bathroom
Appliances	Dishwasher-Built-In, Dryer, Hood Fan, Refrigerator, Stove-Electric, Washer, Wine/Beverage Cooler, Projector
Heating	Forced Air-2, Natural Gas
Fireplace	Yes
Fireplaces	Glass Door
Stories	2
Has Basement	Yes
Basement	Full, Finished

Exterior

Exterior	Wood, Stucco
Exterior Features	Cul-De-Sac, Fenced, Low Maintenance Landscape, Playground Nearby,

	Public Transportation, See Remarks
Roof	Cedar Shakes
Construction	Wood, Stucco
Foundation	Concrete Perimeter

School Information

Elementary	Patricia Heights
Middle	Hillcrest Jr High School
High	Jasper Place High School

Additional Information

Date Listed	July 3rd, 2025
Days on Market	4
Zoning	Zone 22

DATA IS DEEMED RELIABLE BUT IS NOT GUARANTEED ACCURATE BY THE REALTORS® ASSOCIATION OF EDMONTON. COPYRIGHT 2025 BY THE REALTORS® ASSOCIATION OF EDMONTON. ALL RIGHTS RESERVED. Trademarks are owned or controlled by the Canadian Real Estate Association (CREA) and identify real estate professionals who are members of CREA (REALTOR®, REALTORS®) and/or the quality of services they provide (MLS®, Multiple Listing Service®)

Listing information last updated on July 6th, 2025 at 10:32pm MDT