

## \$545,000 - 20027 26 Avenue, Edmonton

MLS® #E4445659

**\$545,000**

3 Bedroom, 2.50 Bathroom, 1,884 sqft

Single Family on 0.00 Acres

The Uplands, Edmonton, AB

A beautiful 2 storey home built by Coventry, offers a total of 3 bedrooms & 2.5 bathrooms and is located in the community of the Uplands. The entrance leads you to the open concept layout main floor with 9'™ ceiling. The beautifully designed kitchen features ceramic tile backsplash, stainless steel appliances, quartz counter tops, bright white cabinets and a pantry. The living room is spacious and includes an electric fireplace and large window facing the backyard that brings in lots of natural daylight. Sliding door leads out to a large composite deck and landscaped & fenced yard. The main level is completed by a 2 pc bathroom. Upstairs the primary bedroom includes a 4 piece ensuite with double sinks and a walk-in closet and custom wardrobe. An additional 2 bedrooms (1 with a walk-in closet) and a bonus room complete the upstairs. Double attached garage that leads into a cul-de-sac. Close to schools, playgrounds, ravines, Anthony Henday, amenities and public transportation.

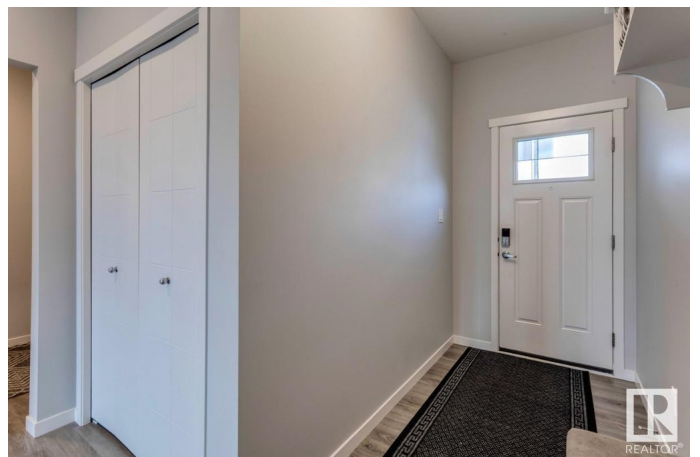
Built in 2020

### Essential Information

MLS® # E4445659

Price \$545,000

Bedrooms 3



Bathrooms	2.50
Full Baths	2
Half Baths	1
Square Footage	1,884
Acres	0.00
Year Built	2020
Type	Single Family
Sub-Type	Detached Single Family
Style	2 Storey
Status	Active

### Community Information

Address	20027 26 Avenue
Area	Edmonton
Subdivision	The Uplands
City	Edmonton
County	ALBERTA
Province	AB
Postal Code	T6M 1K3

### Amenities

Amenities	No Smoking Home, See Remarks
Parking Spaces	4
Parking	Double Garage Attached

### Interior

Interior Features	ensuite bathroom
Appliances	Air Conditioning-Central, Dishwasher-Built-In, Dryer, Oven-Microwave, Refrigerator, Stove-Electric, Washer
Heating	Forced Air-1, Natural Gas
Fireplace	Yes
Fireplaces	Mantel
Stories	2
Has Basement	Yes
Basement	Full, Unfinished

### Exterior

Exterior	Wood, Stone, Vinyl
Exterior Features	Park/Reserve, Playground Nearby

Roof	Asphalt Shingles
Construction	Wood, Stone, Vinyl
Foundation	Concrete Perimeter

**Additional Information**

Date Listed	July 2nd, 2025
Days on Market	4
Zoning	Zone 57

DATA IS DEEMED RELIABLE BUT IS NOT GUARANTEED ACCURATE BY THE REALTORS® ASSOCIATION OF EDMONTON. COPYRIGHT 2025 BY THE REALTORS® ASSOCIATION OF EDMONTON. ALL RIGHTS RESERVED.Trademarks are owned or controlled by the Canadian Real Estate Association (CREA) and identify real estate professionals who are members of CREA (REALTOR®, REALTORS®) and/or the quality of services they provide (MLS®, Multiple Listing Service®)

Listing information last updated on July 6th, 2025 at 6:47pm MDT