

\$629,900 - 1543 Siskin Link Link, Edmonton

MLS® #E4445071

\$629,900

3 Bedroom, 2.50 Bathroom, 2,097 sqft

Single Family on 0.00 Acres

Kinglet Gardens, Edmonton, AB

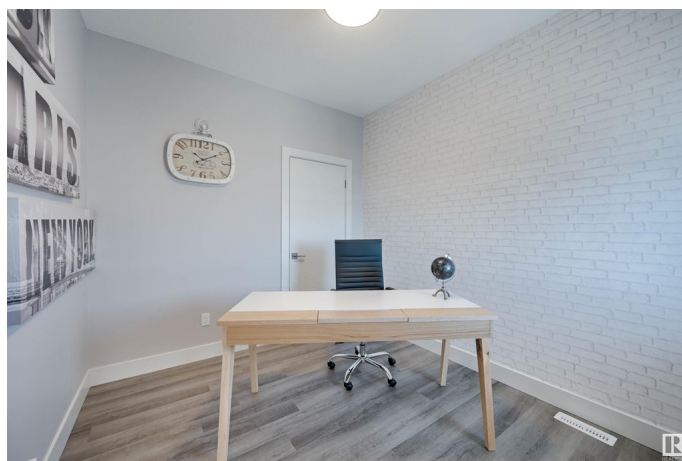
Welcome to this brand new 2101 SQFT 2 Storey Chelsea model home by award winning Blackstone Homes in Kinglet Gardens. Upon entering you will be welcomed by nice foyer finished with beautiful wainscoting leading to a much needed den, perfect for work from home days, mudroom with built ins with walk through pantry leading to beautiful kitchen with huge island. Dining room with nice windows overlooking the backyard w/deck. Great room offers 18' open to below ceiling with linear fireplace with tiles/wood finish & coffered ceiling. The 2nd floor offers 3 big size bedrooms, 2.5 baths, bonus room & huge laundry room. Big size master bedroom with beautiful spa like ensuite offering double sinks, shower & freestanding tub, huge WIC. Other features - Separate entrance, 9' main/basement ceiling, upgraded shower with 10mm frameless door, MDF shelving throughout, feature walls, upgraded plumbing/flooring/electrical, upgraded quartz throughout, all appliances, New Home Warranty. Close to ravine, lake, park & shopping.

Built in 2025

Essential Information

MLS® # E4445071

Price \$629,900



Bedrooms	3
Bathrooms	2.50
Full Baths	2
Half Baths	1
Square Footage	2,097
Acres	0.00
Year Built	2025
Type	Single Family
Sub-Type	Detached Single Family
Style	2 Storey
Status	Active

Community Information

Address	1543 Siskin Link Link
Area	Edmonton
Subdivision	Kinglet Gardens
City	Edmonton
County	ALBERTA
Province	AB
Postal Code	T5S 0T9

Amenities

Amenities	Carbon Monoxide Detectors, Ceiling 9 ft., Closet Organizers, No Animal Home, No Smoking Home, Vinyl Windows, 9 ft. Basement Ceiling
Parking	Double Garage Attached

Interior

Interior Features	ensuite bathroom
Appliances	Dishwasher-Built-In, Dryer, Garage Opener, Hood Fan, Oven-Microwave, Refrigerator, Stove-Electric, Washer
Heating	Forced Air-1, Natural Gas
Fireplace	Yes
Fireplaces	Insert
Stories	2
Has Basement	Yes
Basement	Full, Unfinished

Exterior

Exterior	Wood, Stone, Vinyl
----------	--------------------

Exterior Features	Golf Nearby, No Back Lane, Not Fenced, Not Landscaped, Park/Reserve, Picnic Area, Playground Nearby, Shopping Nearby
Roof	Asphalt Shingles
Construction	Wood, Stone, Vinyl
Foundation	Concrete Perimeter

Additional Information

Date Listed	June 30th, 2025
Days on Market	10
Zoning	Zone 59
HOA Fees Freq.	Annually

DATA IS DEEMED RELIABLE BUT IS NOT GUARANTEED ACCURATE BY THE REALTORS® ASSOCIATION OF EDMONTON. COPYRIGHT 2025 BY THE REALTORS® ASSOCIATION OF EDMONTON. ALL RIGHTS RESERVED. Trademarks are owned or controlled by the Canadian Real Estate Association (CREA) and identify real estate professionals who are members of CREA (REALTOR®, REALTORS®) and/or the quality of services they provide (MLS®, Multiple Listing Service®)

Listing information last updated on July 9th, 2025 at 11:17pm MDT