

\$384,900 - 2 600 Bellerose Drive, St. Albert

MLS® #E4444533

\$384,900

4 Bedroom, 2.50 Bathroom, 1,327 sqft

Condo / Townhouse on 0.00 Acres

Oakmont, St. Albert, AB

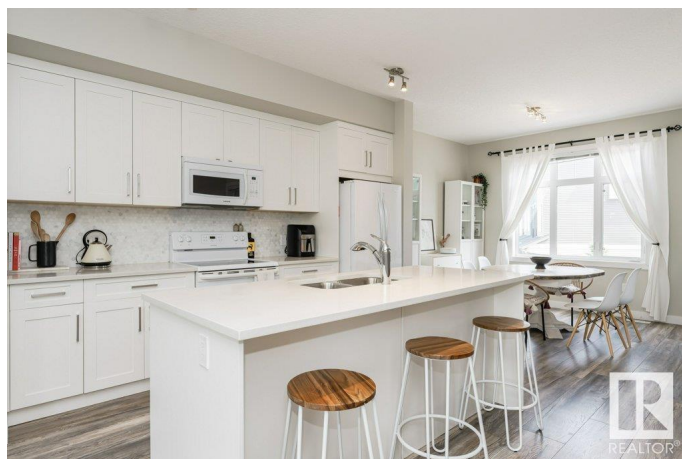
Welcome to this beautiful 3-story townhome in the sought-after Oakmont area of St. Albert. Built in 2018, this home is functional while charming. Featuring 4 bedrooms & 4 bathrooms and a nice fenced back yard that caters to all your family's needs. The attached single garage and double-wide driveway provide ample parking. Step into the spacious foyer, leading to a newly finished private fourth bedroom and full bathroom—ideal for guests or as a cozy retreat. The bright, open-concept main floor boasts a chef's kitchen with a large island, quartz countertops, and an upgraded fridge, plus a convenient half bath. Relax on the private front balcony or entertain in the fully fenced backyard with a deck & gas BBQ hook-up. Upstairs, discover three generously sized bedrooms, including a master suite with a 4-piece ensuite, another full bathroom, and a laundry area with upgraded washer and dryer. Condo fees cover all yard maintenance and snow removal. This home is a perfect blend of style, comfort, and convenience

Built in 2017

Essential Information

MLS® # E4444533

Price \$384,900



Bedrooms	4
Bathrooms	2.50
Full Baths	2
Half Baths	1
Square Footage	1,327
Acres	0.00
Year Built	2017
Type	Condo / Townhouse
Sub-Type	Townhouse
Style	3 Storey
Status	Active

Community Information

Address	2 600 Bellerose Drive
Area	St. Albert
Subdivision	Oakmont
City	St. Albert
County	ALBERTA
Province	AB
Postal Code	T8N 7T5

Amenities

Amenities	Ceiling 10 ft., Hot Water Electric, Parking-Visitor, Sprinkler Sys-Underground
Parking Spaces	3
Parking	Insulated, Single Garage Attached

Interior

Interior Features	ensuite bathroom
Appliances	Dishwasher-Built-In, Dryer, Garage Opener, Refrigerator, Stove-Electric, Washer
Heating	Forced Air-1, Natural Gas
Stories	3
Has Basement	Yes
Basement	None, Finished

Exterior

Exterior	Wood, Stone, Vinyl
Exterior Features	Fenced, Landscaped, Low Maintenance Landscape, Shopping Nearby,

	See Remarks
Roof	Asphalt Shingles
Construction	Wood, Stone, Vinyl
Foundation	Concrete Perimeter

Additional Information

Date Listed	June 26th, 2025
Days on Market	13
Zoning	Zone 24
Condo Fee	\$284

DATA IS DEEMED RELIABLE BUT IS NOT GUARANTEED ACCURATE BY THE REALTORS® ASSOCIATION OF EDMONTON. COPYRIGHT 2025 BY THE REALTORS® ASSOCIATION OF EDMONTON. ALL RIGHTS RESERVED. Trademarks are owned or controlled by the Canadian Real Estate Association (CREA) and identify real estate professionals who are members of CREA (REALTOR®, REALTORS®) and/or the quality of services they provide (MLS®, Multiple Listing Service®)

Listing information last updated on July 9th, 2025 at 6:32pm MDT