

\$239,900 - 15739 121 Street, Edmonton

MLS® #E4444242

\$239,900

3 Bedroom, 1.50 Bathroom, 1,615 sqft

Condo / Townhouse on 0.00 Acres

Dunluce, Edmonton, AB

Welcome to this bright & beautifully maintained end-unit townhouse with sunny southwest exposure in the desirable North Park Village complex. Nestled among mature trees & lush landscaping, this home offers a perfect blend of space, comfort & convenience—just minutes to all amenities. Step into the generous front entry with direct access to the attached garage. The unique 4-level split design allows for separation & flow. The inviting living room boasts large windows, a cozy wood-burning fireplace & walkout to the backyard—great for entertaining or relaxing. A few steps up, the dining area overlooks the living room & connects to the spacious kitchen, ideal for family meals or gatherings. A dedicated laundry room on this level adds function. Upstairs, find 3 well-sized bedrooms, including a primary suite with private 2-piece ensuite & a full 4-piece bath. A fantastic opportunity for first-time buyers, families, or anyone seeking a peaceful, well-run complex with room to grow.

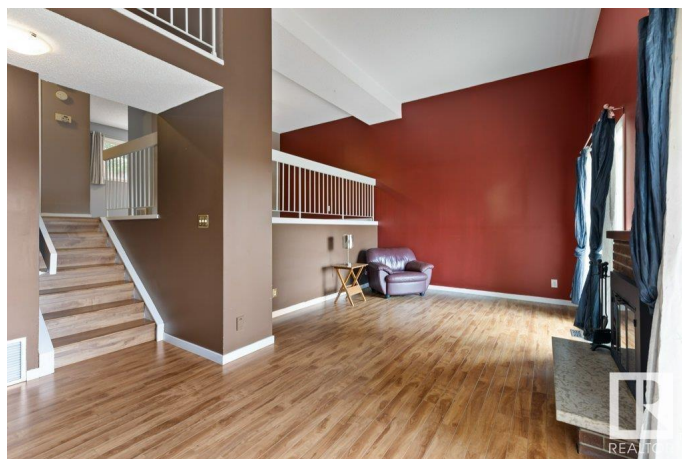
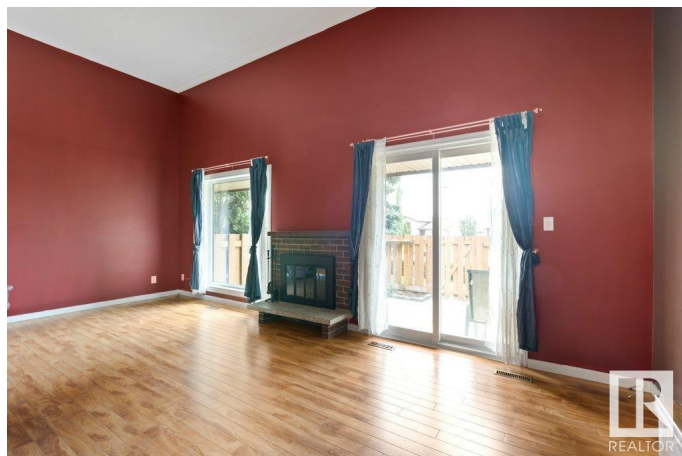
Built in 1976

Essential Information

MLS® # E4444242

Price \$239,900

Bedrooms 3



Bathrooms	1.50
Half Baths	3
Square Footage	1,615
Acres	0.00
Year Built	1976
Type	Condo / Townhouse
Sub-Type	Townhouse
Style	5 Level Split
Status	Active

Community Information

Address	15739 121 Street
Area	Edmonton
Subdivision	Dunluce
City	Edmonton
County	ALBERTA
Province	AB
Postal Code	T5X 2S1

Amenities

Amenities	Parking-Visitor, Patio, See Remarks
Parking	Single Garage Attached

Interior

Interior Features	ensuite bathroom
Appliances	Dishwasher-Built-In, Dryer, Garage Control, Garage Opener, Microwave Hood Fan, Refrigerator, Stove-Electric, Washer, Window Coverings
Heating	Forced Air-1, Natural Gas
Fireplace	Yes
Fireplaces	Brick Facing
Stories	5
Has Basement	Yes
Basement	Full, Finished

Exterior

Exterior	Wood, Brick
Exterior Features	Fenced, Golf Nearby, Landscaped, Playground Nearby, Public Transportation, Schools, Shopping Nearby
Roof	Asphalt Shingles

Construction	Wood, Brick
Foundation	Concrete Perimeter

Additional Information

Date Listed	June 25th, 2025
Days on Market	14
Zoning	Zone 27
Condo Fee	\$425

DATA IS DEEMED RELIABLE BUT IS NOT GUARANTEED ACCURATE BY THE REALTORS® ASSOCIATION OF EDMONTON. COPYRIGHT 2025 BY THE REALTORS® ASSOCIATION OF EDMONTON. ALL RIGHTS RESERVED.Trademarks are owned or controlled by the Canadian Real Estate Association (CREA) and identify real estate professionals who are members of CREA (REALTOR®, REALTORS®) and/or the quality of services they provide (MLS®, Multiple Listing Service®)

Listing information last updated on July 9th, 2025 at 2:18pm MDT