

# \$1,998,800 - 54 Windermere Drive, Edmonton

MLS® #E4441388

**\$1,998,800**

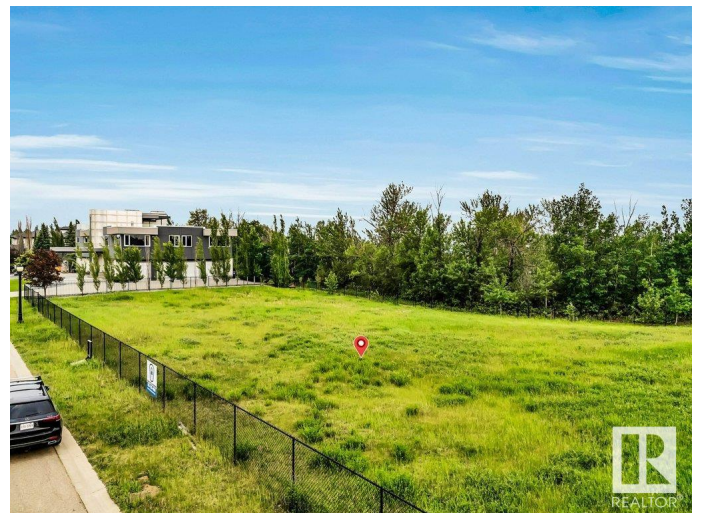
0 Bedroom, 0.00 Bathroom,  
Single Family on 0.00 Acres

Windermere, Edmonton, AB

Welcome to Windermere! Welcome to an extraordinary opportunity to own a vacant lot in one of Edmonton's most coveted communities – Windermere Ridge. This expansive 0.61-acre (over 2,468 square meters) parcel of land is situated in a premier location, offering the perfect canvas to build your luxury dream home. Nestled in a serene & private setting, the lot backs onto a lush treed area w/ breathtaking green space views, creating a peaceful natural retreat right in your backyard. Enjoy the scenic beauty of the North Saskatchewan River & the prestigious River Ridge Golf and Country Club, just a stone's throw away. This location is truly a golfer's and nature lover's paradise. Located in one of the finest neighbourhoods in Edmonton, Windermere Ridge is renowned for its exclusivity, upscale homes & unparalleled lifestyle. This lot not only offers privacy & tranquility, but also easy access to top-tier amenities, shopping, fine dining, top-rated schools, & major roadways!

## Essential Information

|           |             |
|-----------|-------------|
| MLS® #    | E4441388    |
| Price     | \$1,998,800 |
| Bathrooms | 0.00        |
| Acres     | 0.00        |



|          |                 |
|----------|-----------------|
| Type     | Single Family   |
| Sub-Type | Vacant Lot/Land |
| Status   | Active          |

### Community Information

|             |                     |
|-------------|---------------------|
| Address     | 54 Windermere Drive |
| Area        | Edmonton            |
| Subdivision | Windermere          |
| City        | Edmonton            |
| County      | ALBERTA             |
| Province    | AB                  |
| Postal Code | T6W 0S1             |

### Exterior

|                   |  |
|-------------------|--|
| Exterior Features | Airport Nearby, Backs Onto Park/Trees, Fenced, Flat Site, Fruit Trees/Shrubs, Golf Nearby, Park/Reserve, Public Transportation, Ravine View, Schools, Shopping Nearby, See Remarks |
| Lot Description   | 0.61 Acr   |

### School Information

|            |                       |
|------------|-----------------------|
| Elementary | Const. Daniel Woodall |
| Middle     | Riverbend School      |
| High       | Lilian Osborne School |

### Additional Information

|                |                |
|----------------|----------------|
| Date Listed    | June 9th, 2025 |
| Days on Market | 75             |
| Zoning         | Zone 56        |

DATA IS DEEMED RELIABLE BUT IS NOT GUARANTEED ACCURATE BY THE REALTORS® ASSOCIATION OF EDMONTON. COPYRIGHT 2025 BY THE REALTORS® ASSOCIATION OF EDMONTON. ALL RIGHTS RESERVED. Trademarks are owned or controlled by the Canadian Real Estate Association (CREA) and identify real estate professionals who are members of CREA (REALTOR®, REALTORS®) and/or the quality of services they provide (MLS®, Multiple Listing Service®)

Listing information last updated on August 22nd, 2025 at 10:47pm MDT