

\$799,000 - 572 Butterworth Way, Edmonton

MLS® #E4440411

\$799,000

7 Bedroom, 4.50 Bathroom, 2,767 sqft

Single Family on 0.00 Acres

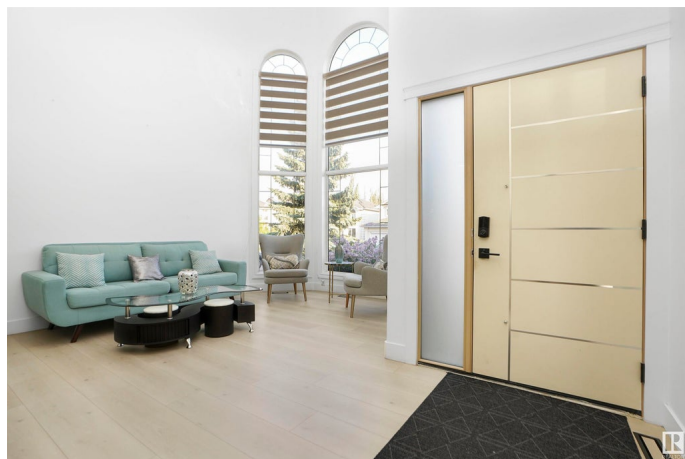
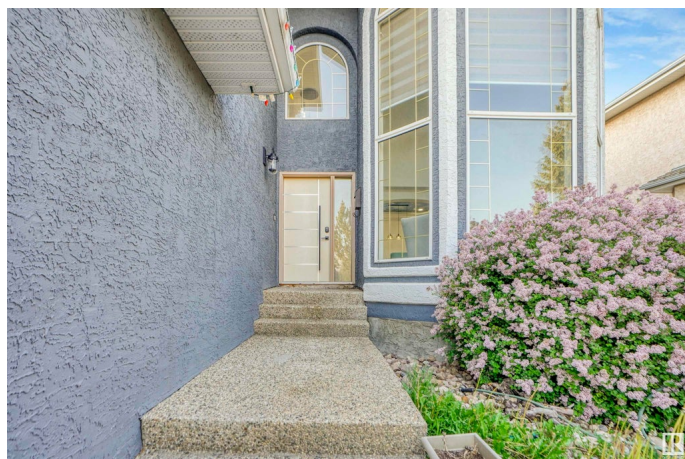
Bulyea Heights, Edmonton, AB

Step into this beautifully renovated 7-bed, 4.5-bath home backing onto Snow Valley Ski Hill. The grand foyer welcomes you with soaring open-to-above ceilings and motorized blinds, leading into a formal dining area. A cozy gas fireplace anchors the family living room, which flows seamlessly into a bright breakfast nook and chef's kitchen featuring smart appliances and elegant finishes. The main floor includes a private bedroom, while the upper level offers four spacious bedrooms—one with stunning views of the ski club and downtown, plus a spa-like ensuite with a jet tub. The fully finished basement adds two more bedrooms and a second living area. Thoughtfully designed with premium systems—including 2 furnaces, 2 A/C units, dual thermostats, and a heated garage—this home offers comfort, efficiency, and style in every season.

Built in 1998

Essential Information

| | |
|------------|-----------|
| MLS® # | E4440411 |
| Price | \$799,000 |
| Bedrooms | 7 |
| Bathrooms | 4.50 |
| Full Baths | 4 |
| Half Baths | 1 |



| | |
|----------------|------------------------|
| Square Footage | 2,767 |
| Acres | 0.00 |
| Year Built | 1998 |
| Type | Single Family |
| Sub-Type | Detached Single Family |
| Style | 2 Storey |
| Status | Active |

Community Information

| | |
|-------------|---------------------|
| Address | 572 Butterworth Way |
| Area | Edmonton |
| Subdivision | Bulyea Heights |
| City | Edmonton |
| County | ALBERTA |
| Province | AB |
| Postal Code | T6R 2P6 |

Amenities

| | |
|-----------|---|
| Amenities | Off Street Parking, Air Conditioner, Carbon Monoxide Detectors, Ceiling 9 ft., Deck, Detectors Smoke, Hot Water Tankless, Low Flw/Dual Flush Toilet, No Animal Home, No Smoking Home, Patio, Smart/Program. Thermostat, Wet Bar, Natural Gas BBQ Hookup, 9 ft. Basement Ceiling |
| Parking | Double Garage Attached |

Interior

| | |
|-------------------|---|
| Interior Features | ensuite bathroom |
| Appliances | Air Conditioning-Central, Dishwasher-Built-In, Dryer, Oven-Built-In, Oven-Microwave, Stove-Gas, Washer, Wine/Beverage Cooler, Refrigerators-Two |
| Heating | Forced Air-2, Natural Gas |
| Stories | 3 |
| Has Basement | Yes |
| Basement | Full, Finished |

Exterior

| | |
|-------------------|---|
| Exterior | Wood, Stucco |
| Exterior Features | Backs Onto Park/Trees, Landscaped, Ravine View, River Valley View, Schools, Shopping Nearby, Ski Hill Nearby, View Downtown, Partially Fenced |
| Roof | Cedar Shakes |

| | |
|--------------|--------------------|
| Construction | Wood, Stucco |
| Foundation | Concrete Perimeter |

Additional Information

| | |
|----------------|----------------|
| Date Listed | June 5th, 2025 |
| Days on Market | 31 |
| Zoning | Zone 14 |

DATA IS DEEMED RELIABLE BUT IS NOT GUARANTEED ACCURATE BY THE REALTORS® ASSOCIATION OF EDMONTON. COPYRIGHT 2025 BY THE REALTORS® ASSOCIATION OF EDMONTON. ALL RIGHTS RESERVED.Trademarks are owned or controlled by the Canadian Real Estate Association (CREA) and identify real estate professionals who are members of CREA (REALTOR®, REALTORS®) and/or the quality of services they provide (MLS®, Multiple Listing Service®)

Listing information last updated on July 6th, 2025 at 5:02pm MDT