

\$143,888 - 410 111 Edwards Drive, Edmonton

MLS® #E4439971

\$143,888

1 Bedroom, 1.00 Bathroom, 635 sqft

Condo / Townhouse on 0.00 Acres

Ellerslie, Edmonton, AB

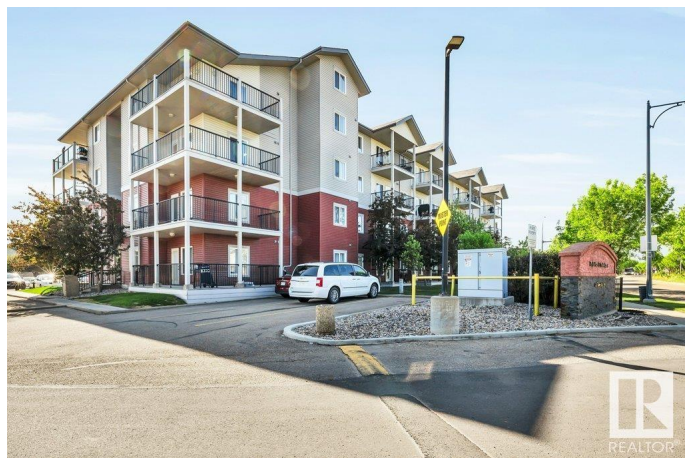
Welcome to Park Place Court in Ellerslie! This charming TOP-FLOOR UNIT, 1-bedroom, 1-bathroom top-floor, 635 sqft condo unit offers a rare & VALUABLE TANDEM PARKING. Featuring a bright & open layout, this unit makes it an ideal home for a first-time buyer or young professional. The unit features a VAULTED CEILING, a PRIVATE BALCONY, for enjoying your morning coffee or relaxing after a long day. The building is equipped with a variety of amenities, including a social room and party room, elevator and secured doors. Plus, with heat and water included in the condo fees, you'll enjoy hassle-free living and predictable monthly costs. This condo is not only a great place to live but also a sound investment opportunity. Whether you're a first-time buyer, a young professional seeking an affordable home, or an investor looking to expand your portfolio, this unit offers solid value in a desirable area. Close to all amenities including public transportation and shopping! TANDEM PARKING CAN FIT 2 LARGE VEHICLES!

Built in 2006

Essential Information

MLS® # E4439971

Price \$143,888



Bedrooms	1
Bathrooms	1.00
Full Baths	1
Square Footage	635
Acres	0.00
Year Built	2006
Type	Condo / Townhouse
Sub-Type	Lowrise Apartment
Style	Single Level Apartment
Status	Active

Community Information

Address	410 111 Edwards Drive
Area	Edmonton
Subdivision	Ellerslie
City	Edmonton
County	ALBERTA
Province	AB
Postal Code	T6X 0C4

Amenities

Amenities	Detectors Smoke, Intercom, Parking-Visitor, Party Room, Security Door, Social Rooms, Sprinkler System-Fire, Storage-In-Suite, Vinyl Windows
Parking Spaces	2
Parking	Stall, Tandem

Interior

Appliances	Dishwasher-Built-In, Dryer, Hood Fan, Refrigerator, Stove-Electric, Washer, Window Coverings
Heating	Hot Water, Natural Gas
# of Stories	4
Stories	1
Has Basement	Yes
Basement	None, No Basement

Exterior

Exterior	Wood, Vinyl
Exterior Features	Landscaped, Playground Nearby, Public Transportation, Schools, Shopping Nearby

Roof	Asphalt Shingles
Construction	Wood, Vinyl
Foundation	Concrete Perimeter

School Information

Elementary	Sakaw School
Middle	Kisewatsiwin School
High	J. Percy Page School

Additional Information

Date Listed	June 2nd, 2025
Days on Market	15
Zoning	Zone 53
Condo Fee	\$347

DATA IS DEEMED RELIABLE BUT IS NOT GUARANTEED ACCURATE BY THE REALTORS® ASSOCIATION OF EDMONTON. COPYRIGHT 2025 BY THE REALTORS® ASSOCIATION OF EDMONTON. ALL RIGHTS RESERVED. Trademarks are owned or controlled by the Canadian Real Estate Association (CREA) and identify real estate professionals who are members of CREA (REALTOR®, REALTORS®) and/or the quality of services they provide (MLS®, Multiple Listing Service®)

Listing information last updated on June 17th, 2025 at 7:32pm MDT