

## \$644,400 - 19410 22a Avenue, Edmonton

MLS® #E4439960

**\$644,400**

4 Bedroom, 3.00 Bathroom, 2,132 sqft

Single Family on 0.00 Acres

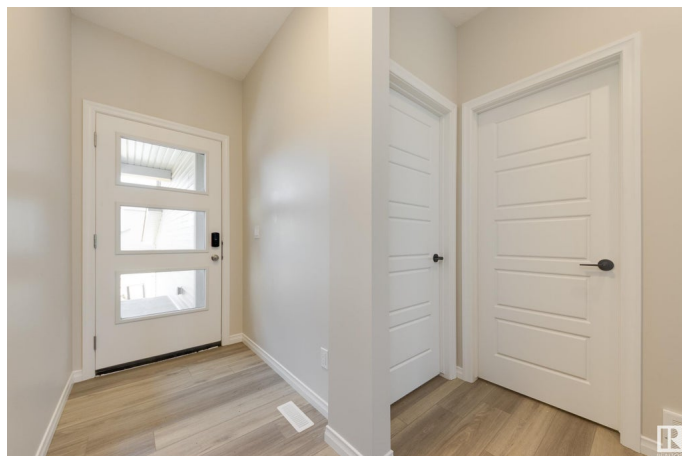
River's Edge, Edmonton, AB

River's Edge - an exciting newer community where you are mere minutes from all the amenities but feel like you are secluded! This amazing 2133 sq.ft. two story by Jayman BUILT offers Core Performance features including SOLAR, triple pane windows, Smart home technology, HRV and high efficiency furnace, tankless hot water system, stainless steel kitchen appliances and designer planned palette! The Karma 22 offers a main floor bedroom and full bath! The great room and dining area are open to the kitchen with stunning two tone cabinets & lots of sleek quartz counter space! Walk through pantry offers lots of storage. The second floor has a luxurious owners suite with 5 pce. ensuite & walk in closet that opens to the laundry room. There is a bonus family room; a walk-in linen closet and two more bedrooms plus a second full bath. This is an amazing opportunity! Plus FULL Landscaped!

Built in 2025

### Essential Information

MLS® #	E4439960
Price	\$644,400
Bedrooms	4
Bathrooms	3.00
Full Baths	3



Square Footage	2,132
Acres	0.00
Year Built	2025
Type	Single Family
Sub-Type	Detached Single Family
Style	2 Storey
Status	Active

### Community Information

Address	19410 22a Avenue
Area	Edmonton
Subdivision	River's Edge
City	Edmonton
County	ALBERTA
Province	AB
Postal Code	T6M 3J2

### Amenities

Amenities	Ceiling 9 ft., Hot Water Tankless
Parking	Double Garage Attached

### Interior

Interior Features	ensuite bathroom
Appliances	Dishwasher-Built-In, Hood Fan, Oven-Microwave, Refrigerator, Stove-Electric
Heating	Forced Air-1, Natural Gas
Stories	2
Has Basement	Yes
Basement	Full, Unfinished

### Exterior

Exterior	Wood, Vinyl
Exterior Features	Landscaped, See Remarks
Roof	Asphalt Shingles
Construction	Wood, Vinyl
Foundation	Concrete Perimeter

### Additional Information

Date Listed	May 30th, 2025
-------------	----------------

Days on Market 84

Zoning Zone 57

DATA IS DEEMED RELIABLE BUT IS NOT GUARANTEED ACCURATE BY THE REALTORS® ASSOCIATION OF EDMONTON. COPYRIGHT 2025 BY THE REALTORS® ASSOCIATION OF EDMONTON. ALL RIGHTS RESERVED. Trademarks are owned or controlled by the Canadian Real Estate Association (CREA) and identify real estate professionals who are members of CREA (REALTOR®, REALTORS®) and/or the quality of services they provide (MLS®, Multiple Listing Service®)

Listing information last updated on August 22nd, 2025 at 12:02am MDT