

\$265,000 - 101 8730 82 Avenue, Edmonton

MLS® #E4439234

\$265,000

2 Bedroom, 2.00 Bathroom, 962 sqft

Condo / Townhouse on 0.00 Acres

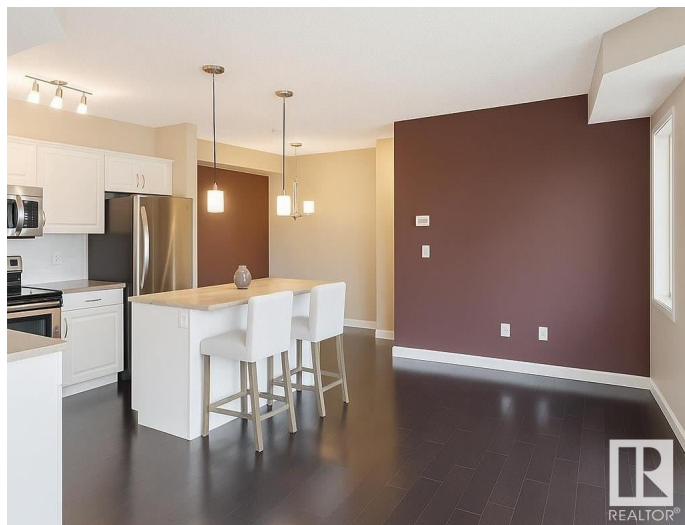
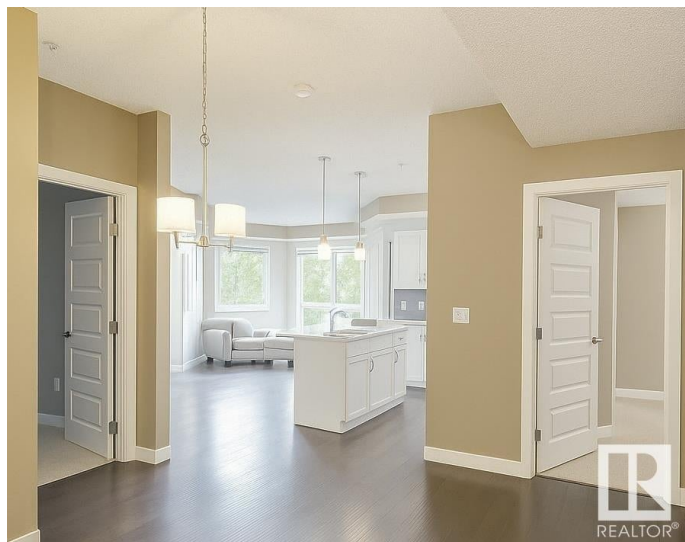
Bonnie Doon, Edmonton, AB

Welcome to this bright and spacious two-bedroom, two-bath ground-floor unit, offering the perfect blend of comfort and convenience. The open-concept layout features a modern kitchen with stainless steel appliances, an island with a breakfast bar, and a cozy dining area that flows seamlessly into the inviting living space. Step outside onto your patio—ideal for morning coffee or evening relaxation. The primary bedroom boasts a walk-in closet and a 4-piece ensuite, while the second bedroom offers flexibility for guests or a home office. Additional highlights include in-suite laundry and an underground parking stall. Located close to public transit, parks, shops, and all amenities, this unit is the perfect place to call home!

Built in 2009

Essential Information

MLS® #	E4439234
Price	\$265,000
Bedrooms	2
Bathrooms	2.00
Full Baths	2
Square Footage	962
Acres	0.00
Year Built	2009



Type	Condo / Townhouse
Sub-Type	Lowrise Apartment
Style	Single Level Apartment
Status	Active

Community Information

Address	101 8730 82 Avenue
Area	Edmonton
Subdivision	Bonnie Doon
City	Edmonton
County	ALBERTA
Province	AB
Postal Code	T6C 0Z1

Amenities

Amenities	Patio
Parking	Stall, Underground

Interior

Interior Features	ensuite bathroom
Appliances	Dishwasher-Built-In, Dryer, Microwave Hood Fan, Refrigerator, Stove-Electric, Washer
Heating	Forced Air-1, Natural Gas
# of Stories	4
Stories	1
Has Basement	Yes
Basement	None, No Basement

Exterior

Exterior	Wood, Stone, Stucco
Exterior Features	Low Maintenance Landscape, Park/Reserve, Playground Nearby, Public Transportation, Schools, Shopping Nearby
Roof	Asphalt Shingles
Construction	Wood, Stone, Stucco
Foundation	Concrete Perimeter

Additional Information

Date Listed	May 28th, 2025
Days on Market	21

Zoning	Zone 18
Condo Fee	\$507

DATA IS DEEMED RELIABLE BUT IS NOT GUARANTEED ACCURATE BY THE REALTORS® ASSOCIATION OF EDMONTON. COPYRIGHT 2025 BY THE REALTORS® ASSOCIATION OF EDMONTON. ALL RIGHTS RESERVED. Trademarks are owned or controlled by the Canadian Real Estate Association (CREA) and identify real estate professionals who are members of CREA (REALTOR®, REALTORS®) and/or the quality of services they provide (MLS®, Multiple Listing Service®)

Listing information last updated on June 18th, 2025 at 7:02am MDT