

\$489,500 - 21234 88a Avenue, Edmonton

MLS® #E4439207

\$489,500

3 Bedroom, 2.00 Bathroom, 1,259 sqft

Single Family on 0.00 Acres

Suder Greens, Edmonton, AB

Welcome to this well-maintained Home2Love tucked away on a quiet street in sought-after Lewis Estates. This charming bi-level offers a bright, open layout with vaulted ceilings & large windows that allow an abundance of natural light to flow throughout. The beautiful kitchen is the heart of the home, featuring a stunning granite island where family & friends will love to gather. The kitchen, nook, living & dining areas flow seamlessly for modern living. One bedroom & a full bath complete the main floor. The private primary suite is above the garage with a walk-in closet & 4-pc ensuite including a jetted tub. The fully finished basement has front & rear stair access, a spacious family room & large third bedroom—ideal for guests, teens or a home office. Enjoy the landscaped backyard with a maintenance free deck, patio, gazebo, shed & room to play or relax. Recent updates include central A/C & Hot water tank. Close to schools, transit & shopping with quick access to the Henday, Whitemud & Lewis Estates Golf.

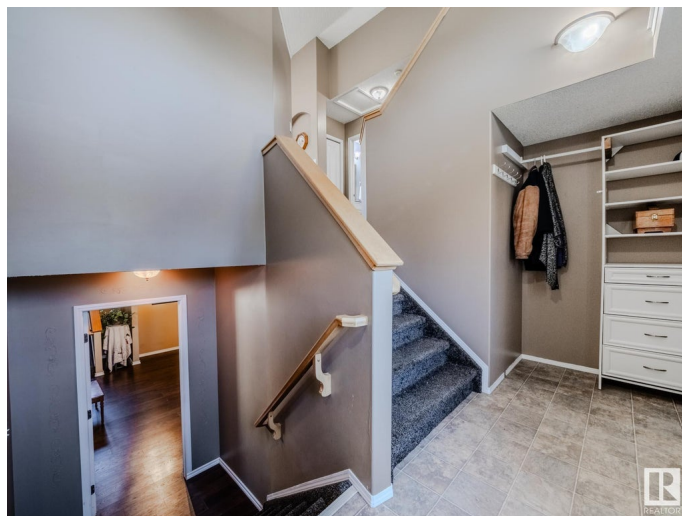
Built in 2003

Essential Information

MLS® # E4439207

Price \$489,500

Bedrooms 3



Bathrooms	2.00
Full Baths	2
Square Footage	1,259
Acres	0.00
Year Built	2003
Type	Single Family
Sub-Type	Detached Single Family
Style	Bi-Level
Status	Active

Community Information

Address	21234 88a Avenue
Area	Edmonton
Subdivision	Suder Greens
City	Edmonton
County	ALBERTA
Province	AB
Postal Code	T5T 6V2

Amenities

Amenities	Air Conditioner, Deck, Fire Pit, Gazebo, Patio, Vaulted Ceiling
Parking	Double Garage Attached

Interior

Interior Features	ensuite bathroom
Appliances	Air Conditioning-Central, Dishwasher-Built-In, Dryer, Garage Control, Garage Opener, Microwave Hood Fan, Refrigerator, Storage Shed, Stove-Electric, Washer
Heating	Forced Air-1, Natural Gas
Fireplace	Yes
Fireplaces	Corner, Tile Surround
Stories	3
Has Basement	Yes
Basement	Full, Finished

Exterior

Exterior	Wood, Vinyl
Exterior Features	Fenced, Landscaped, Park/Reserve, Playground Nearby, Public Transportation, Schools, Shopping Nearby

Roof	Asphalt Shingles
Construction	Wood, Vinyl
Foundation	Concrete Perimeter

School Information

Elementary	Winterburn
Middle	Michael Phair
High	Jasper Place

Additional Information

Date Listed	May 29th, 2025
Days on Market	19
Zoning	Zone 58

DATA IS DEEMED RELIABLE BUT IS NOT GUARANTEED ACCURATE BY THE REALTORS® ASSOCIATION OF EDMONTON. COPYRIGHT 2025 BY THE REALTORS® ASSOCIATION OF EDMONTON. ALL RIGHTS RESERVED. Trademarks are owned or controlled by the Canadian Real Estate Association (CREA) and identify real estate professionals who are members of CREA (REALTOR®, REALTORS®) and/or the quality of services they provide (MLS®, Multiple Listing Service®)

Listing information last updated on June 17th, 2025 at 3:17pm MDT