

Courtesy Of Zoheer H Umarji Of Maximum Realty Inc.

\$429,000 - 15 Lewis Estates Blvd, Edmonton

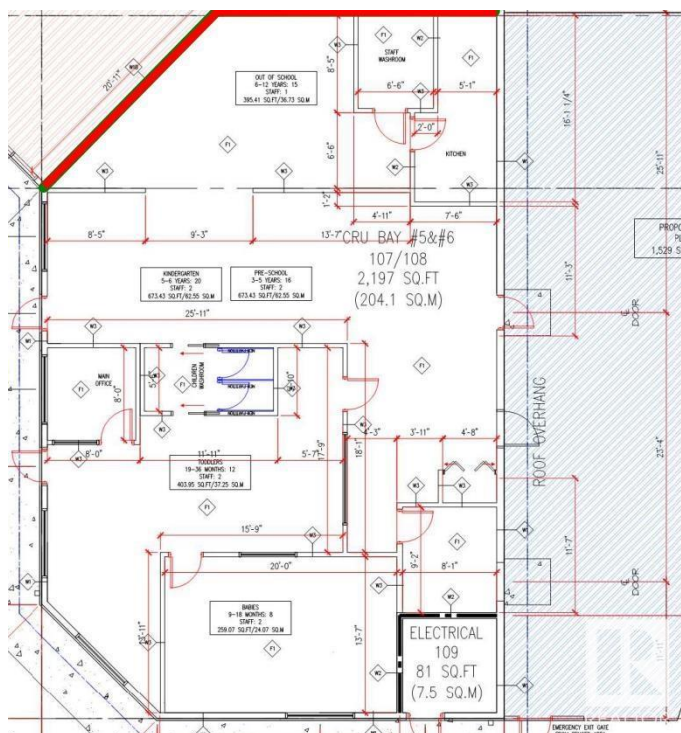
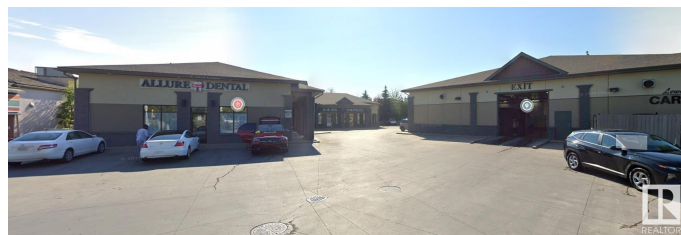
MLS® #E4435638

\$429,000

0 Bedroom, 0.00 Bathroom,
Business on 0.00 Acres

Webber Greens, Edmonton, AB

Brand New Daycare opportunity in Lewis Estates. Approved from the City Of Edmonton for 50 kids. Construction of interior improvements scheduled to be completed by first week of June. Lots of density in this busy and growing part of the city. Plenty of time to set up and open by September. Sale is for Tenant Improvements Only, Licencing will be the operators responsibility



Essential Information

MLS® #	E4435638
Price	\$429,000
Bathrooms	0.00
Acres	0.00
Type	Business
Status	Active

Community Information

Address	15 Lewis Estates Blvd
Area	Edmonton
Subdivision	Webber Greens
City	Edmonton
County	ALBERTA
Province	AB
Postal Code	T5T 6A4

Exterior

Exterior	Brick, Wood Frame
Construction	Brick, Wood Frame

Additional Information

Date Listed	May 9th, 2025
Days on Market	4
Zoning	Zone 58

DATA IS DEEMED RELIABLE BUT IS NOT GUARANTEED ACCURATE BY THE REALTORS® ASSOCIATION OF EDMONTON. COPYRIGHT 2025 BY THE REALTORS® ASSOCIATION OF EDMONTON. ALL RIGHTS RESERVED.Trademarks are owned or controlled by the Canadian Real Estate Association (CREA) and identify real estate professionals who are members of CREA (REALTOR®, REALTORS®) and/or the quality of services they provide (MLS®, Multiple Listing Service®)

Listing information last updated on May 13th, 2025 at 6:47am MDT