

Courtesy Of Linda Ta Of Real Estate Professionals Inc.

\$435,000 - 62 130 Element Drive, St. Albert

MLS® #E4433954

\$435,000

3 Bedroom, 2.50 Bathroom, 1,563 sqft
Condo / Townhouse on 0.00 Acres

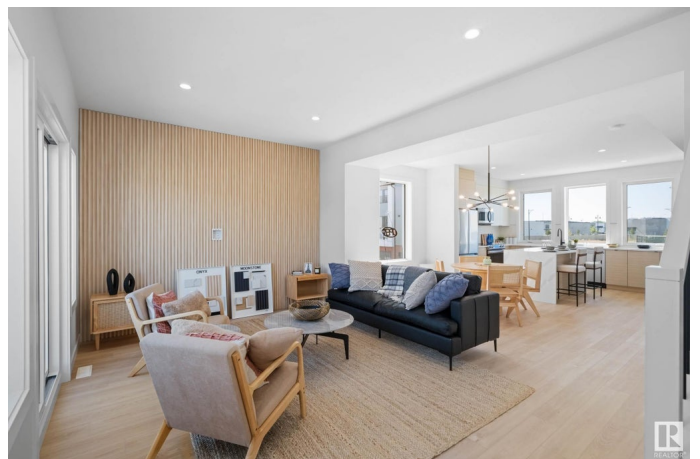
Erin Ridge North, St. Albert, AB

Move-in Ready as Early as This October! Be the first to live in this brand-new 3-storey townhome at Eve at Erin Ridge in St. Albert—ranked among Canada’s safest cities and home to top-ranked schools. With 1,563 sq. ft., this modern home offers 3 beds, 2.5 baths, a ground-floor flex room, 9 ft ceilings, and a chef-inspired kitchen with quartz counters, walk-in pantry, and stainless steel appliances. Enjoy natural light, a private balcony, and an oversized double attached garage. The upper level includes laundry, 2 bedrooms, and a spacious primary suite with walk-in closet and ensuite. Nestled in a family-friendly community near trails, parks, schools, and Costco. Alberta New Home Warranty included. Ideal for families looking to settle down—or investors seeking strong long-term value in one of Alberta’s most desirable cities.

Built in 2025

Essential Information

MLS® #	E4433954
Price	\$435,000
Bedrooms	3
Bathrooms	2.50
Full Baths	2
Half Baths	1



Square Footage	1,563
Acres	0.00
Year Built	2025
Type	Condo / Townhouse
Sub-Type	Townhouse
Style	3 Storey
Status	Active

Community Information

Address	62 130 Element Drive
Area	St. Albert
Subdivision	Erin Ridge North
City	St. Albert
County	ALBERTA
Province	AB
Postal Code	T8N 7X2

Amenities

Amenities	Ceiling 9 ft., Closet Organizers, Deck, Detectors Smoke, Parking-Visitor
Parking Spaces	3
Parking	Double Garage Attached

Interior

Interior Features	ensuite bathroom
Appliances	Dishwasher-Built-In, Dryer, Garage Control, Garage Opener, Microwave Hood Fan, Refrigerator, Stove-Electric, Washer
Heating	Forced Air-1, Natural Gas
Stories	3
Has Basement	Yes
Basement	None, No Basement

Exterior

Exterior	Wood, Brick, Metal
Exterior Features	Landscaped, Playground Nearby, Private Setting, Schools, Shopping Nearby, See Remarks
Roof	Asphalt Shingles
Construction	Wood, Brick, Metal
Foundation	Concrete Perimeter

School Information

Elementary	Lois E Hole Elementary
Middle	Joseph M Demko
High	Ecole Alexandre-Tache

Additional Information

Date Listed	May 2nd, 2025
Days on Market	66
Zoning	Zone 24
Condo Fee	\$150

DATA IS DEEMED RELIABLE BUT IS NOT GUARANTEED ACCURATE BY THE REALTORS® ASSOCIATION OF EDMONTON. COPYRIGHT 2025 BY THE REALTORS® ASSOCIATION OF EDMONTON. ALL RIGHTS RESERVED. Trademarks are owned or controlled by the Canadian Real Estate Association (CREA) and identify real estate professionals who are members of CREA (REALTOR®, REALTORS®) and/or the quality of services they provide (MLS®, Multiple Listing Service®)

Listing information last updated on July 7th, 2025 at 12:02am MDT