

\$549,900 - 501 141 Festival Way, Sherwood Park

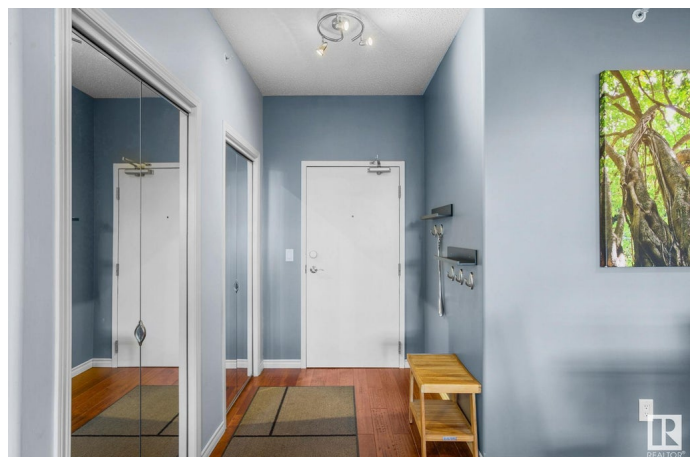
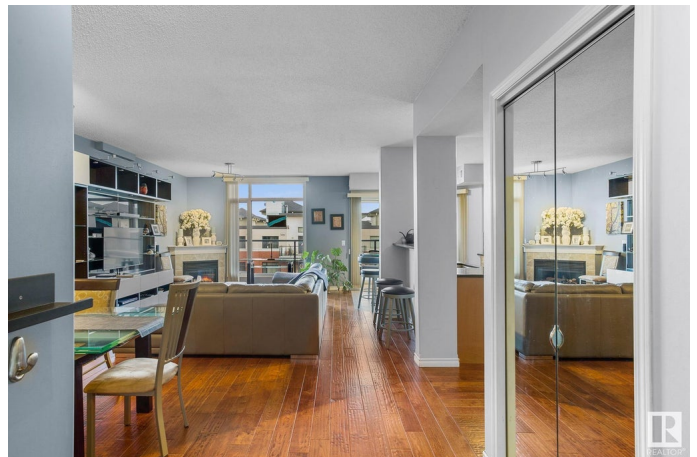
MLS® #E4432717

\$549,900

2 Bedroom, 2.00 Bathroom, 1,471 sqft
Condo / Townhouse on 0.00 Acres

Centre In The Park, Sherwood Park, AB

LUXURY PENTHOUSE with GORGEOUS VIEWS! Welcome to Park Vista, right in the CENTRE OF SHERWOOD PARK. Walk in and enjoy the new ENGINEERED HARDWOOD and MASSIVE WINDOWS letting in an abundance of NATURAL LIGHT. The large kitchen features GRANITE COUNTERS, SS appliances, tile backsplash and loads of counter and cabinet space. Cozy gas-fireplace in the living room brings warmth to the space. Casual breakfast nook plus large formal dining space makes entertaining easy and enjoyable. Step outside onto the MASSIVE balcony (500+ sq ft) and enjoy the views and some outdoor living! Directly beside the kitchen is the walk-in pantry with in-suite laundry. The first bedroom features french doors and can be used as a home office or bedroom. Primary bedroom features balcony access, several closets, and 5pc ensuite with tub/shower AND walk-in shower. Includes 2 TITLED UNDERGROUND STALLS. Unit has been IMMACULATEDLY CARED FOR and is FRESHLY PAINTED. Building features two work-out rooms and rentable guest suites.



Built in 2007

Essential Information

MLS® #	E4432717
Price	\$549,900

Bedrooms	2
Bathrooms	2.00
Full Baths	2
Square Footage	1,471
Acres	0.00
Year Built	2007
Type	Condo / Townhouse
Sub-Type	Lowrise Apartment
Style	Single Level Apartment
Status	Active

Community Information

Address	501 141 Festival Way
Area	Sherwood Park
Subdivision	Centre In The Park
City	Sherwood Park
County	ALBERTA
Province	AB
Postal Code	T8A 3V8

Amenities

Amenities	Air Conditioner, Exercise Room, Guest Suite, No Animal Home, No Smoking Home, Parking-Extra, Party Room, Storage Cage
Parking	Underground
Is Waterfront	Yes

Interior

Interior Features	ensuite bathroom
Appliances	Air Conditioning-Central, Dishwasher-Built-In, Dryer, Microwave Hood Fan, Oven-Built-In, Refrigerator, Stove-Electric, Washer, Window Coverings
Heating	Fan Coil, Heat Pump, Natural Gas
# of Stories	6
Stories	1
Has Basement	Yes
Basement	None, No Basement

Exterior

Exterior	Concrete, Brick, Stucco
----------	-------------------------

Exterior Features	Park/Reserve, Picnic Area, Playground Nearby, Public Transportation, Schools, Shopping Nearby, Stream/Pond
Roof	EPDM Membrane
Construction	Concrete, Brick, Stucco
Foundation	Concrete Perimeter

Additional Information

Date Listed	April 25th, 2025
Days on Market	119
Zoning	Zone 25
Condo Fee	\$966

DATA IS DEEMED RELIABLE BUT IS NOT GUARANTEED ACCURATE BY THE REALTORS® ASSOCIATION OF EDMONTON. COPYRIGHT 2025 BY THE REALTORS® ASSOCIATION OF EDMONTON. ALL RIGHTS RESERVED. Trademarks are owned or controlled by the Canadian Real Estate Association (CREA) and identify real estate professionals who are members of CREA (REALTOR®, REALTORS®) and/or the quality of services they provide (MLS®, Multiple Listing Service®)

Listing information last updated on August 21st, 2025 at 9:48pm MDT