

\$175,300 - 316 10404 24 Avenue, Edmonton

MLS® #E4432679

\$175,300

2 Bedroom, 1.00 Bathroom, 1,141 sqft
Condo / Townhouse on 0.00 Acres

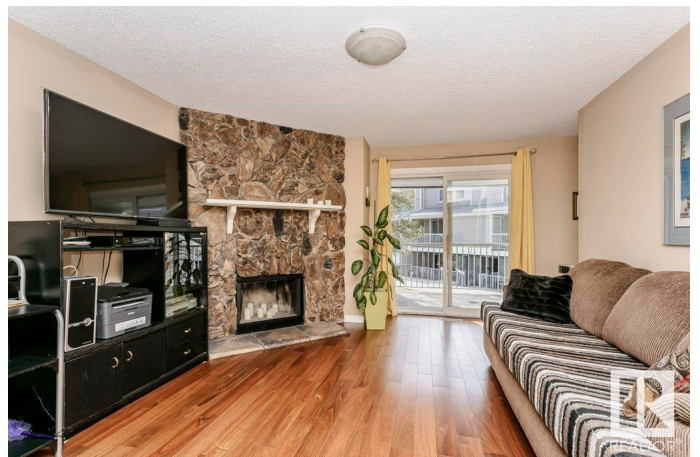
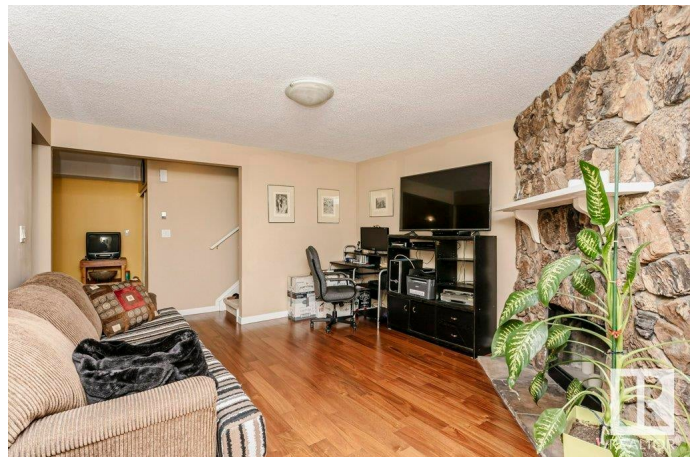
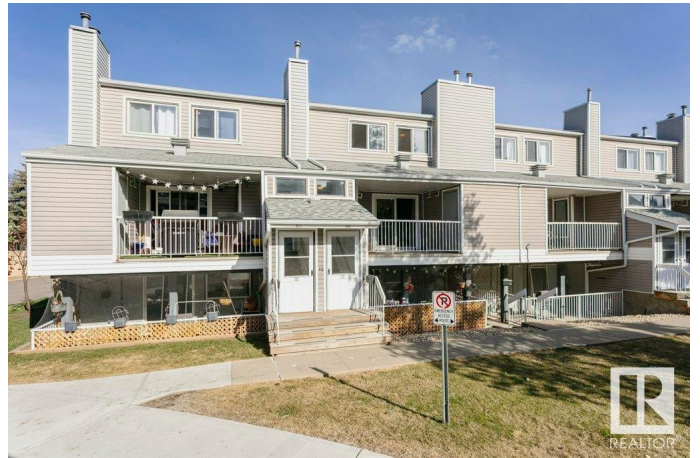
Ermineskin, Edmonton, AB

This spacious two bedroom condo has a unique layout and tons of storage, offering space to spread out while still maintaining that homey feel! The first floor has a living room that features a cozy fireplace and a view of the roomy south-facing deck to enjoy those gorgeous summer evenings. There's also a spacious dining room and kitchen, as well as a massive pantry and storage area. Upstairs you'll find two large, bright bedrooms. The primary bedroom has a walk-through closet and its own access to the bathroom for that ensuite-like feel. Laundry is also upstairs for easy access! Location can't be beat - there's easy access to the Century Park LRT, the Henday, tons of shopping at South Common. Lots of visitor and off-street parking too! This is the perfect home for students, first time home buyers looking to break into the market, investors, and pretty much anyone who wants a lovely home with low payments and low condo fees!

Built in 1978

Essential Information

MLS® #	E4432679
Price	\$175,300
Bedrooms	2
Bathrooms	1.00



Full Baths	1
Square Footage	1,141
Acres	0.00
Year Built	1978
Type	Condo / Townhouse
Sub-Type	Stacked Townhouse
Style	2 Storey
Status	Active

Community Information

Address	316 10404 24 Avenue
Area	Edmonton
Subdivision	Ermineskin
City	Edmonton
County	ALBERTA
Province	AB
Postal Code	T6J 4J7

Amenities

Amenities	On Street Parking, Detectors Smoke, Hot Water Natural Gas, No Animal Home, No Smoking Home, Parking-Plug-Ins, Parking-Visitor, Patio, Storage-In-Suite
Parking Spaces	1
Parking	Stall

Interior

Appliances	Dishwasher-Built-In, Dryer, Hood Fan, Refrigerator, Stove-Electric, Washer
Heating	Forced Air-1, Natural Gas
Stories	2
Has Basement	Yes
Basement	None, No Basement

Exterior

Exterior	Wood, Vinyl
Exterior Features	Playground Nearby, Public Transportation, Schools, Shopping Nearby
Roof	Asphalt Shingles
Construction	Wood, Vinyl
Foundation	Concrete Perimeter

Additional Information

Date Listed	April 24th, 2025
Days on Market	7
Zoning	Zone 16
Condo Fee	\$246

DATA IS DEEMED RELIABLE BUT IS NOT GUARANTEED ACCURATE BY THE REALTORS® ASSOCIATION OF EDMONTON. COPYRIGHT 2025 BY THE REALTORS® ASSOCIATION OF EDMONTON. ALL RIGHTS RESERVED.Trademarks are owned or controlled by the Canadian Real Estate Association (CREA) and identify real estate professionals who are members of CREA (REALTOR®, REALTORS®) and/or the quality of services they provide (MLS®, Multiple Listing Service®)

Listing information last updated on May 1st, 2025 at 6:17am MDT