

\$1,040,000 - 24520 Meridian Street, Edmonton

MLS® #E4432215

\$1,040,000

0 Bedroom, 0.00 Bathroom,
Land Commercial on 0.00 Acres

Edmonton Energy And Technology Park,
Edmonton, AB

Located in the Edmonton Energy & Technology Park, 80 acre parcel perfect for investment, can be rented and or use as yard space. Future development, located mins from highway and Edmonton. House on property.

Built in 1967

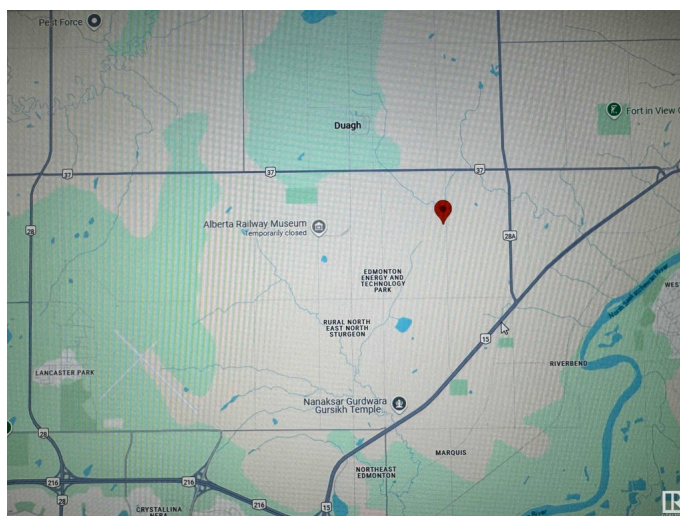
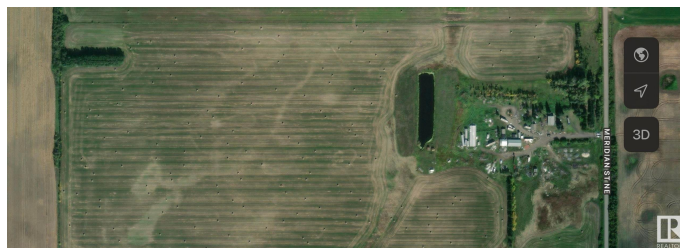
Essential Information

MLS® #	E4432215
Price	\$1,040,000
Bathrooms	0.00
Acres	0.00
Year Built	1967
Type	Land Commercial
Status	Active

Community Information

Address	24520 Meridian Street
Area	Edmonton
Subdivision	Edmonton Energy And Technology Park
City	Edmonton
County	ALBERTA
Province	AB
Postal Code	T5Y 6E9

Additional Information



Date Listed April 23rd, 2025

Days on Market 7

Zoning Zone 50

RE / Bank Owned Yes

DATA IS DEEMED RELIABLE BUT IS NOT GUARANTEED ACCURATE BY THE REALTORS® ASSOCIATION OF EDMONTON. COPYRIGHT 2025 BY THE REALTORS® ASSOCIATION OF EDMONTON. ALL RIGHTS RESERVED. Trademarks are owned or controlled by the Canadian Real Estate Association (CREA) and identify real estate professionals who are members of CREA (REALTOR®, REALTORS®) and/or the quality of services they provide (MLS®, Multiple Listing Service®)

Listing information last updated on April 30th, 2025 at 1:47pm MDT