

## \$765,000 - 1103 11969 Jasper Avenue, Edmonton

MLS® #E4427806

**\$765,000**

2 Bedroom, 2.50 Bathroom, 1,539 sqft

Condo / Townhouse on 0.00 Acres

W&#229;hkw&#227;nt&#227;win, Edmonton, AB

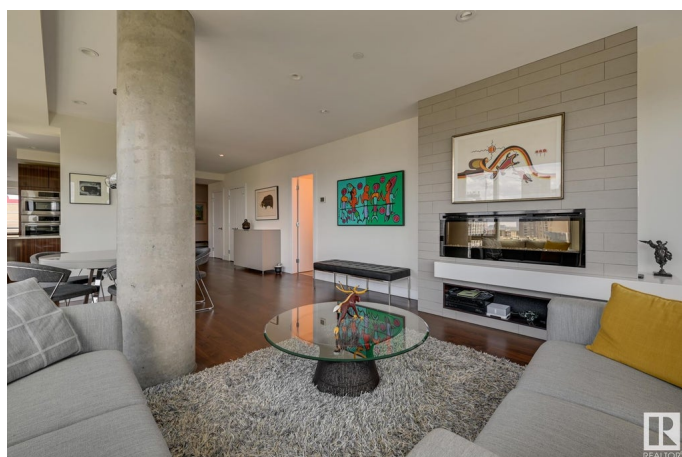
Luxury Living at The Pearl Tower â&#133;“ Unmatched Elegance & Views. Experience sophistication at The Pearl Tower, where contemporary design meets luxury. Enjoy panoramic river valley views and stunning sunsets from two southwest balconies, plus a 3rd north-facing balcony for added space. The open-concept layout is bathed in natural light, featuring a grand double-door entry and custom high-end finishes throughout. Every detail, from premium cabinetry and flooring to top-tier appliances, has been thoughtfully designed. With two living spaces, both with fireplaces and breathtaking views, this home is perfect for relaxation and entertaining. The primary suite boasts a walk-in closet and spa-like ensuite. A versatile second bedroom easily converts from an office to a guest suite with its own ensuite. \* In-suite laundry & storage \* TWO TITLED PARKING STALLS ( 3rd available separately) \* 24-hour concierge, gym, party room & more \* Prime walkable location near downtown & river valley. This is urban luxury at its finest!

Built in 2015

### Essential Information

MLS® # E4427806

Price \$765,000



Bedrooms	2
Bathrooms	2.50
Full Baths	2
Half Baths	1
Square Footage	1,539
Acres	0.00
Year Built	2015
Type	Condo / Townhouse
Sub-Type	Apartment High Rise
Style	Single Level Apartment
Status	Active

### Community Information

Address	1103 11969 Jasper Avenue
Area	Edmonton
Subdivision	W&hkw&nt&win
City	Edmonton
County	ALBERTA
Province	AB
Postal Code	T5K 0P1

### Amenities

Amenities	Air Conditioner, Car Wash, Closet Organizers, Deck, Exercise Room, Security Door
Parking Spaces	2
Parking	Underground

### Interior

Interior Features	ensuite bathroom
Appliances	Dishwasher-Built-In, Dryer, Hood Fan, Oven-Built-In, Refrigerator, Stove-Countertop Electric, Washer
Heating	Heat Pump, Natural Gas
# of Stories	36
Stories	1
Has Basement	Yes
Basement	None, No Basement

### Exterior

Exterior	Concrete
----------	----------

Exterior Features	Golf Nearby, Public Transportation, River Valley View, Schools, Shopping Nearby, View City, View Downtown
Roof	EPDM Membrane
Construction	Concrete
Foundation	Concrete Perimeter

### **Additional Information**

Date Listed	March 27th, 2025
Days on Market	34
Zoning	Zone 12
Condo Fee	\$1,627

DATA IS DEEMED RELIABLE BUT IS NOT GUARANTEED ACCURATE BY THE REALTORS® ASSOCIATION OF EDMONTON. COPYRIGHT 2025 BY THE REALTORS® ASSOCIATION OF EDMONTON. ALL RIGHTS RESERVED. Trademarks are owned or controlled by the Canadian Real Estate Association (CREA) and identify real estate professionals who are members of CREA (REALTOR®, REALTORS®) and/or the quality of services they provide (MLS®, Multiple Listing Service®)

Listing information last updated on April 30th, 2025 at 5:47pm MDT