

## \$549,900 - 3215 20 Street, Edmonton

MLS® #E4426358

**\$549,900**

4 Bedroom, 3.00 Bathroom, 1,530 sqft

Single Family on 0.00 Acres

Silver Berry, Edmonton, AB

This Silver Berry beauty is sure to please, featuring fresh paint, 4 bedrooms & 3 baths. You are invited in to find a bright and spacious entry that leads up to a family sized kitchen with vaulted ceilings, plenty of cabinets, stainless steel appliances & island that overlooks the breakfast nook & dining area. Gorgeous refinished hardwood throughout the living room that is bursting with natural light. Complementing the layout is a bedroom & 4pc bath. The king sized primary suite is up a few steps & makes a lovely retreat with ensuite and walk in closet. Moving down to the fully finished basement you will find new carpet throughout the entertaining sized rec room with fireplace, 2 generous sized bedrooms, 4pc bath & ample storage. HOT WATER ON DEMAND. LOVE the fenced and landscaped yard with deck to enjoy the morning sun. All just steps away from schools, parks, trails and all amenities, plus easy access to Whitemud & Anthony Henday. This is the perfect family home!

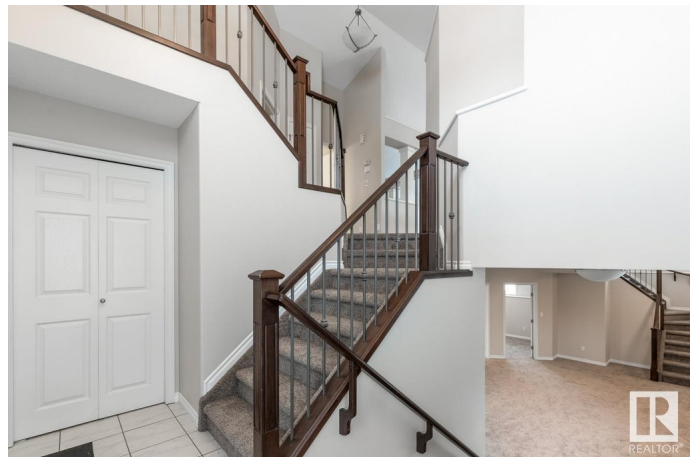
Built in 2010

### Essential Information

MLS® # E4426358

Price \$549,900

Bedrooms 4



Bathrooms	3.00
Full Baths	3
Square Footage	1,530
Acres	0.00
Year Built	2010
Type	Single Family
Sub-Type	Detached Single Family
Style	Bi-Level
Status	Active

### Community Information

Address	3215 20 Street
Area	Edmonton
Subdivision	Silver Berry
City	Edmonton
County	ALBERTA
Province	AB
Postal Code	T6T 0H3

### Amenities

Amenities	Deck, Hot Water Tankless, Vaulted Ceiling, See Remarks
Parking	Double Garage Attached

### Interior

Interior Features	ensuite bathroom
Appliances	Dishwasher-Built-In, Dryer, Garage Control, Garage Opener, Microwave Hood Fan, Refrigerator, Stove-Electric, Washer, Window Coverings
Heating	Forced Air-1, Natural Gas
Fireplace	Yes
Fireplaces	Tile Surround
Stories	2
Has Basement	Yes
Basement	Full, Finished

### Exterior

Exterior	Wood, Stone, Vinyl
Exterior Features	Fenced, Landscaped, Playground Nearby, Public Transportation, Schools, Shopping Nearby, See Remarks
Roof	Asphalt Shingles

Construction	Wood, Stone, Vinyl
Foundation	Concrete Perimeter

**Additional Information**

Date Listed	March 19th, 2025
Days on Market	43
Zoning	Zone 30

DATA IS DEEMED RELIABLE BUT IS NOT GUARANTEED ACCURATE BY THE REALTORS® ASSOCIATION OF EDMONTON. COPYRIGHT 2025 BY THE REALTORS® ASSOCIATION OF EDMONTON. ALL RIGHTS RESERVED.Trademarks are owned or controlled by the Canadian Real Estate Association (CREA) and identify real estate professionals who are members of CREA (REALTOR®, REALTORS®) and/or the quality of services they provide (MLS®, Multiple Listing Service®)

Listing information last updated on May 1st, 2025 at 5:17pm MDT