

\$0 - 12855 141 Street, Edmonton

MLS® #E4424273

\$0

0 Bedroom, 0.00 Bathroom,
Industrial on 0.00 Acres

Bonaventure Industrial, Edmonton, AB

6,830 sq.ft.± industrial bay with grade loading, featuring five offices, a showroom, a kitchenette, and warehouse space. The property has overhead gas-fired units in the warehouse and rooftop HVAC for the office. Conveniently located near St. Albert Trail, Yellowhead Highway, and Anthony Henday.

Built in 1974

Essential Information

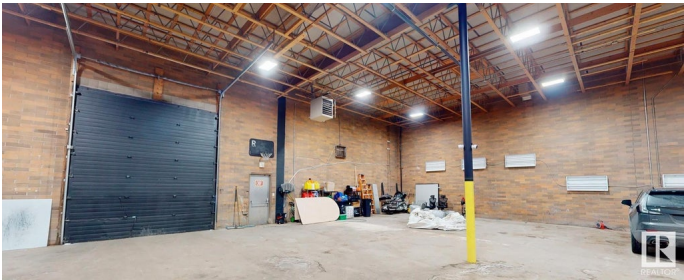
MLS® #	E4424273
Bathrooms	0.00
Acres	0.00
Year Built	1974
Type	Industrial
Status	Active

Community Information

Address	12855 141 Street
Area	Edmonton
Subdivision	Bonaventure Industrial
City	Edmonton
County	ALBERTA
Province	AB
Postal Code	T5L 4N1

Exterior

Exterior	Mixed
----------	-------



Construction Mixed

Additional Information

Date Listed March 5th, 2025

Days on Market 152

Zoning Zone 40

DATA IS DEEMED RELIABLE BUT IS NOT GUARANTEED ACCURATE BY THE REALTORS® ASSOCIATION OF EDMONTON. COPYRIGHT 2025 BY THE REALTORS® ASSOCIATION OF EDMONTON. ALL RIGHTS RESERVED.Trademarks are owned or controlled by the Canadian Real Estate Association (CREA) and identify real estate professionals who are members of CREA (REALTOR®, REALTORS®) and/or the quality of services they provide (MLS®, Multiple Listing Service®)

Listing information last updated on August 4th, 2025 at 10:02am MDT