

# \$1,599,000 - 16222/16216/ 16212 100 Avenue, Edmonton

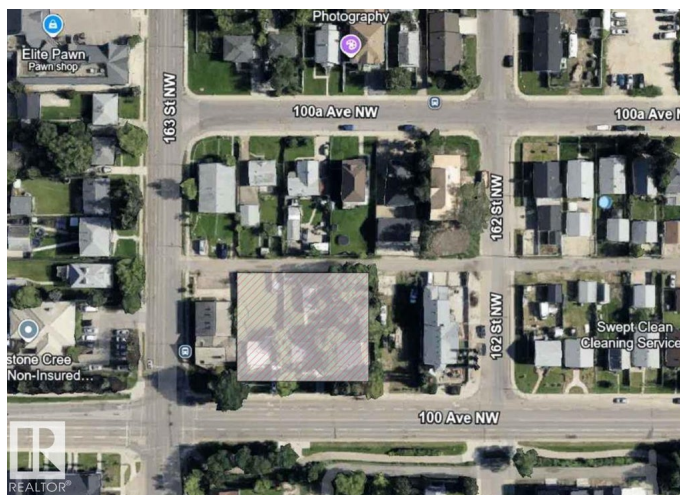
MLS® #E4424053

**\$1,599,000**

0 Bedroom, 0.00 Bathroom,  
Land Commercial on 0.00 Acres

Glenwood (Edmonton), Edmonton, AB

Prime Commercial Land Opportunity in Glenwood for Investors and Multi-Family Builders! This 3-lot parcel, totaling 22,500 sq. ft. (165' x 136'), is zoned RSMh23 and offers significant potential for redevelopment. With development permits currently in process for 99 units (approximately 73,000 sq. ft.), this property is set to become a key component of Glenwood's growing landscape. Located in a highly desirable area with fantastic future prospects, especially with the upcoming LRT line that will greatly enhance accessibility and increase the area's appeal. Don't miss out on this exceptional investment opportunity!

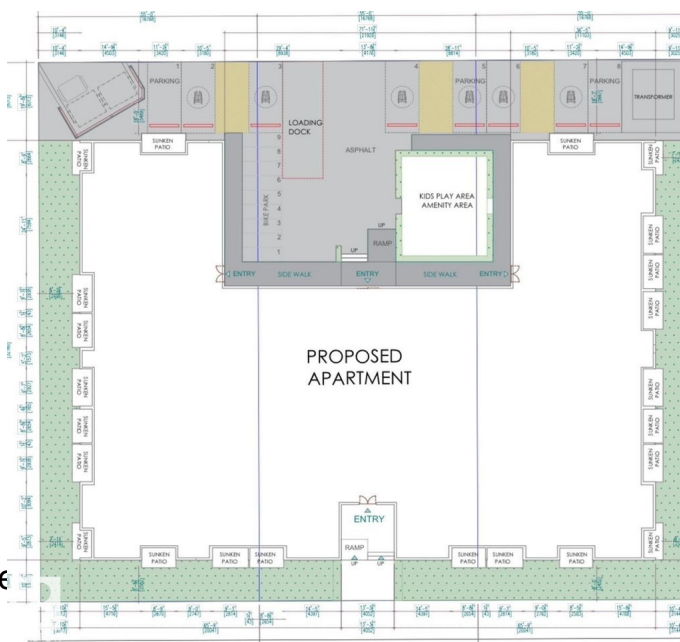


## Essential Information

MLS® #	E4424053
Price	\$1,599,000
Bathrooms	0.00
Acres	0.00
Type	Land Commercial
Status	Active

## Community Information

Address	16222/16216/ 16212 100 Ave
Area	Edmonton
Subdivision	Glenwood (Edmonton)
City	Edmonton



County	ALBERTA
Province	AB
Postal Code	T5P 0L4

### **Additional Information**

Date Listed	March 5th, 2025
Days on Market	169
Zoning	Zone 22

DATA IS DEEMED RELIABLE BUT IS NOT GUARANTEED ACCURATE BY THE REALTORS® ASSOCIATION OF EDMONTON. COPYRIGHT 2025 BY THE REALTORS® ASSOCIATION OF EDMONTON. ALL RIGHTS RESERVED. Trademarks are owned or controlled by the Canadian Real Estate Association (CREA) and identify real estate professionals who are members of CREA (REALTOR®, REALTORS®) and/or the quality of services they provide (MLS®, Multiple Listing Service®)

Listing information last updated on August 21st, 2025 at 9:17pm MDT