

\$1,095,000 - 28011 Hwy 16, Rural Parkland County

MLS® #E4418107

\$1,095,000

0 Bedroom, 0.00 Bathroom,
Land Commercial on 0.00 Acres

Parkland Business Park, Rural Parkland
County, AB

Highway 16 & SH 779 frontage! Located off
service road (Rge Rd 280) to provide easy
access and high visibility. Great speculation or
for rezoning for a single use owner is most
probable or possible subdivision.

Essential Information

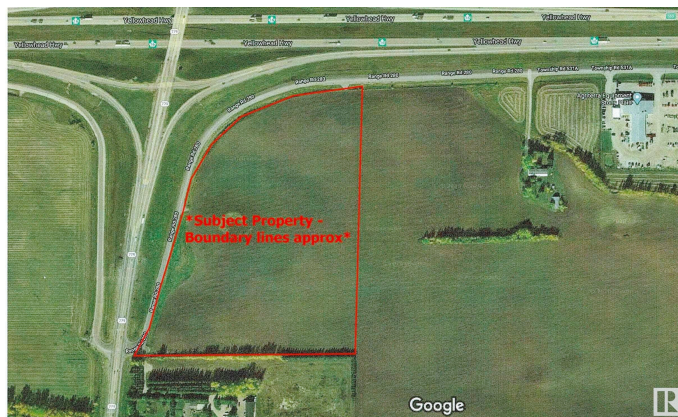
MLS® #	E4418107
Price	\$1,095,000
Bathrooms	0.00
Acres	0.00
Type	Land Commercial
Status	Active

Community Information

Address	28011 Hwy 16
Area	Rural Parkland County
Subdivision	Parkland Business Park
City	Rural Parkland County
County	ALBERTA
Province	AB
Postal Code	T7Z 1C2

Additional Information

Date Listed	January 15th, 2025
Days on Market	218



Zoning

Zone 70

DATA IS DEEMED RELIABLE BUT IS NOT GUARANTEED ACCURATE BY THE REALTORS® ASSOCIATION OF EDMONTON. COPYRIGHT 2025 BY THE REALTORS® ASSOCIATION OF EDMONTON. ALL RIGHTS RESERVED. Trademarks are owned or controlled by the Canadian Real Estate Association (CREA) and identify real estate professionals who are members of CREA (REALTOR®, REALTORS®) and/or the quality of services they provide (MLS®, Multiple Listing Service®)

Listing information last updated on August 21st, 2025 at 6:47pm MDT